



Context of the humanitarian operation in Colombia

11 June 2012

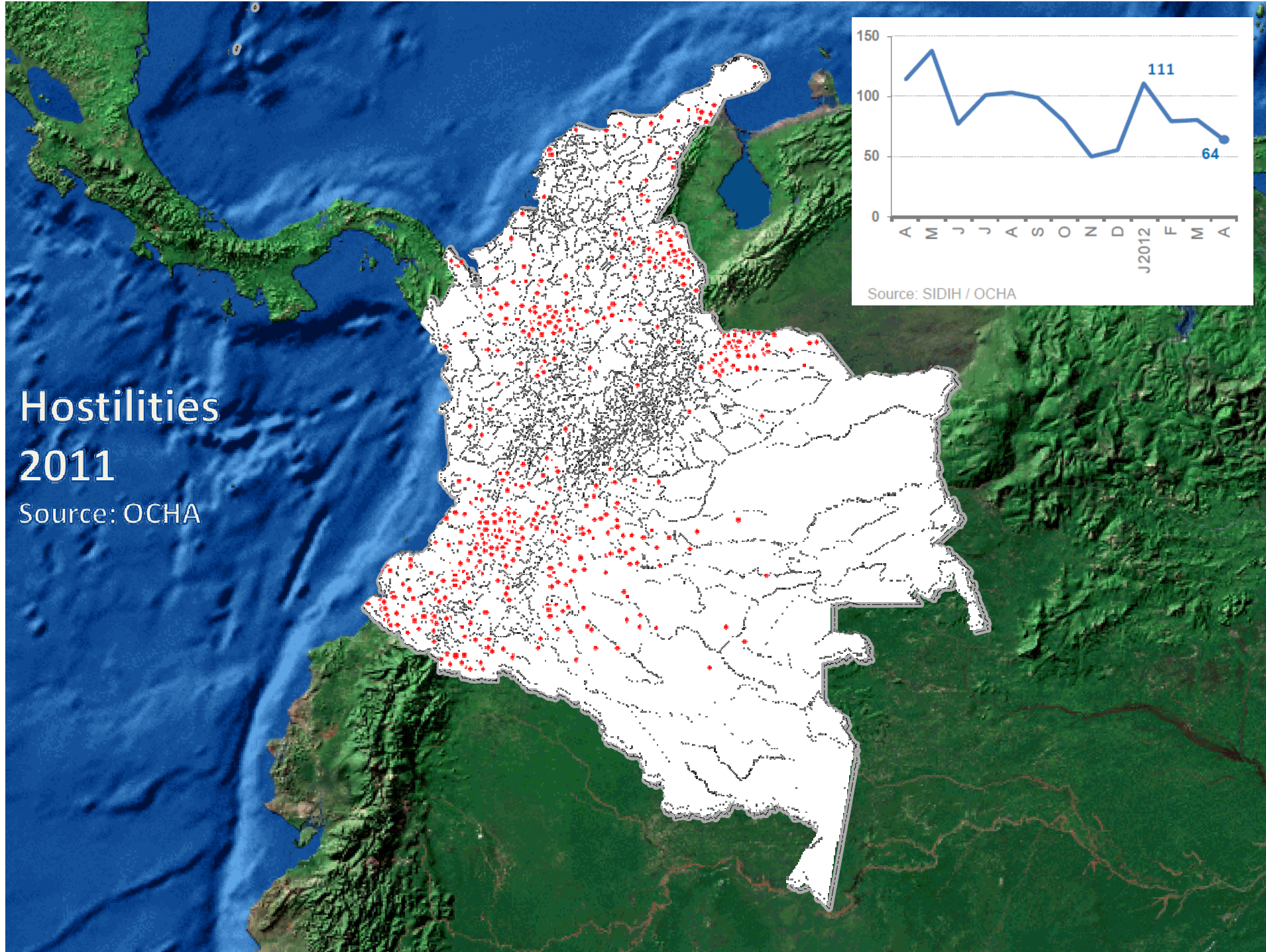


OCHA
Colombia

Humanitarian Context 2011 - 2012

- Context
- Coordination Mechanisms
- Challenges





Hostilities 2011

Source: OCHA

Source: SIDIH / OCHA

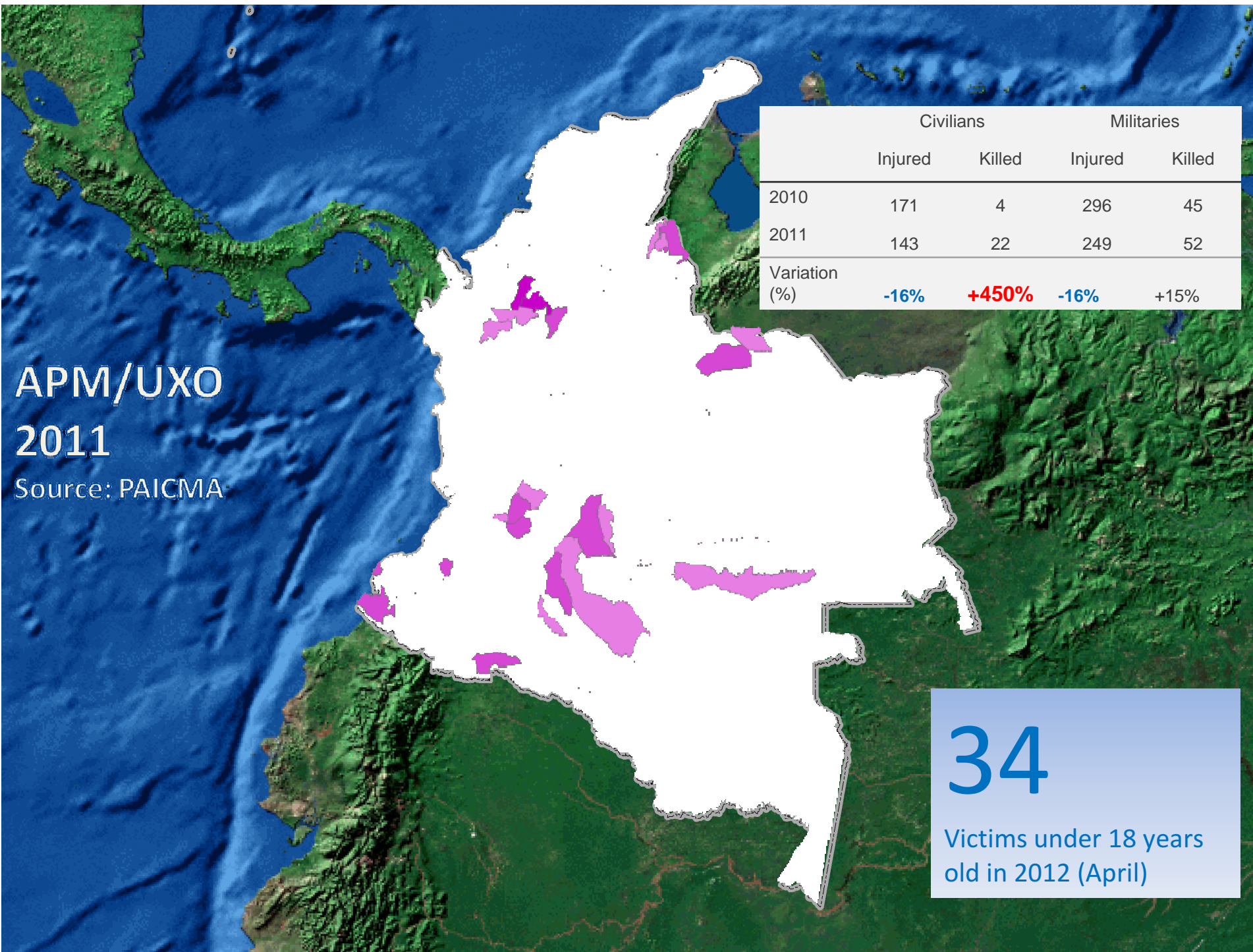
APM/UXO 2011

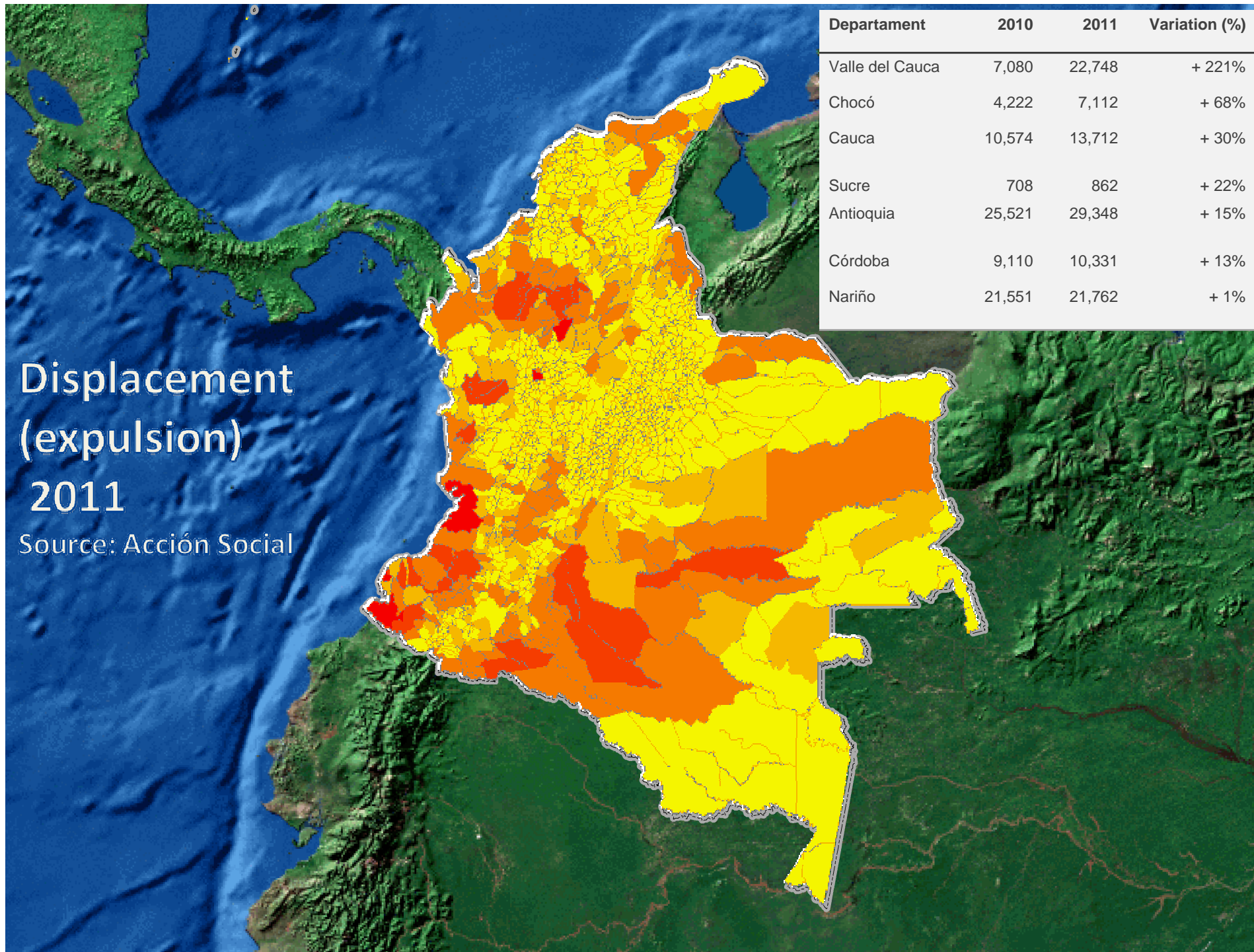
Source: PAICMA

	Civilians		Militaries	
	Injured	Killed	Injured	Killed
2010	171	4	296	45
2011	143	22	249	52
Variation (%)	-16%	+450%	-16%	+15%

34

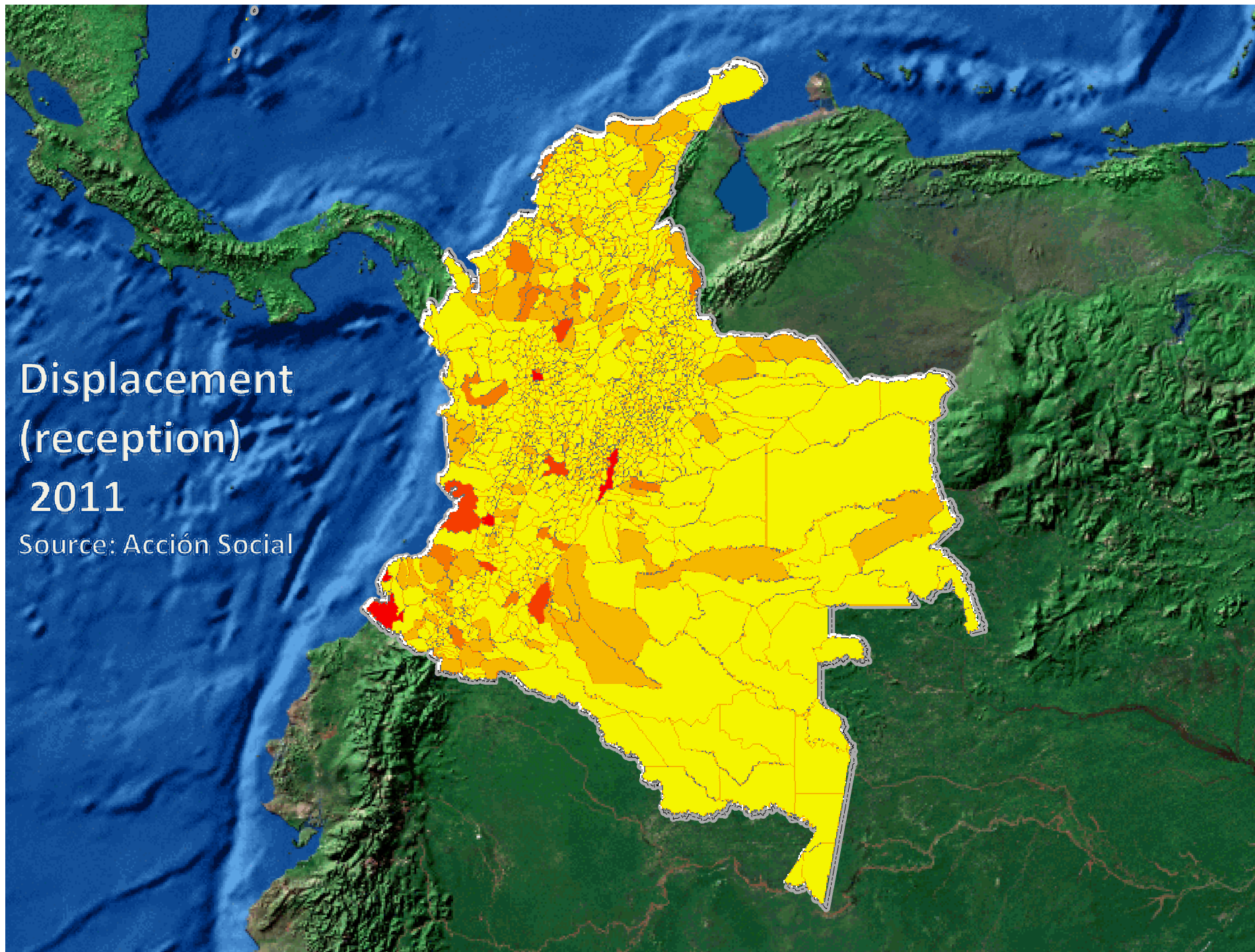
Victims under 18 years old in 2012 (April)





Displacement
(reception)
2011

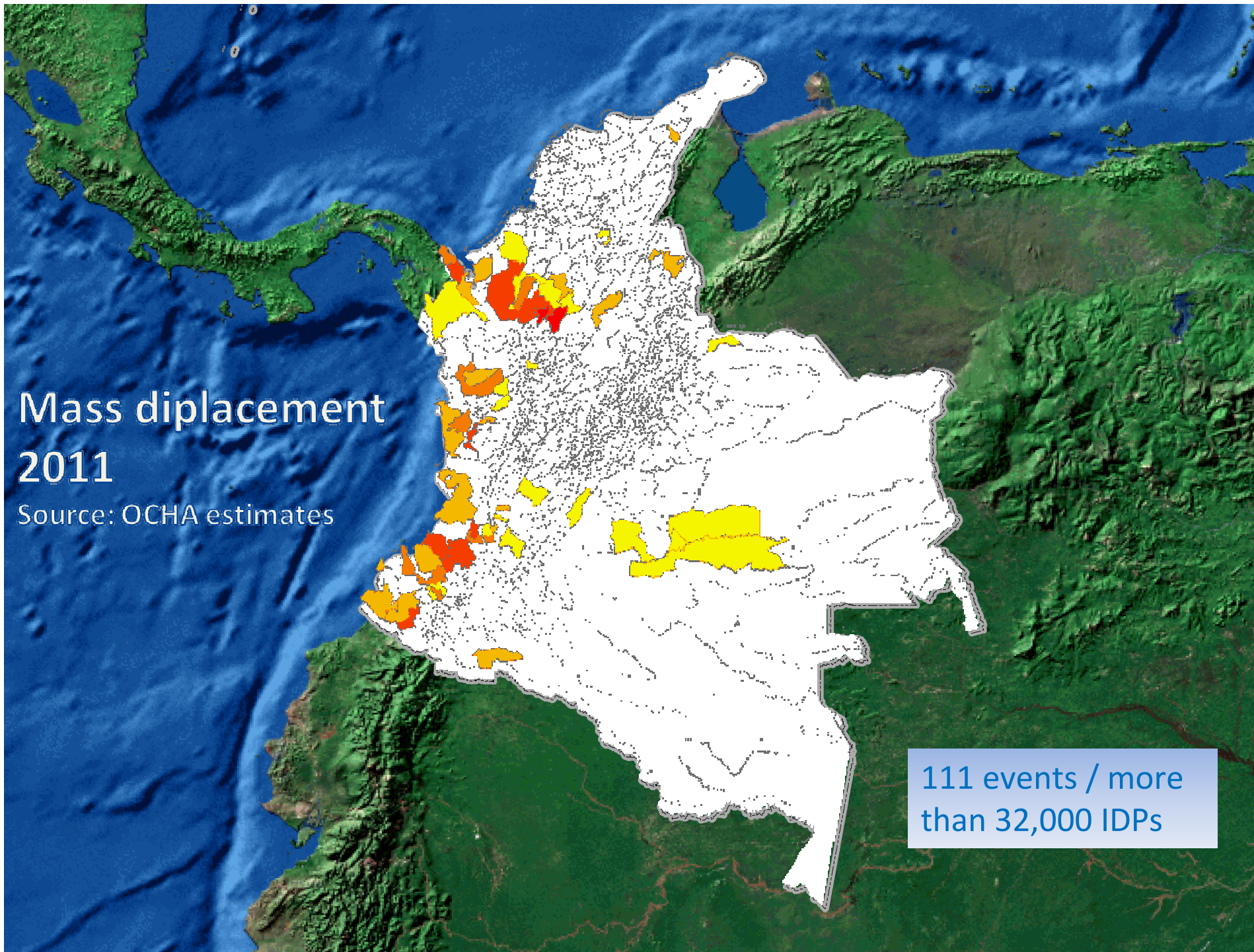
Source: Acción Social



Mass displacement 2011

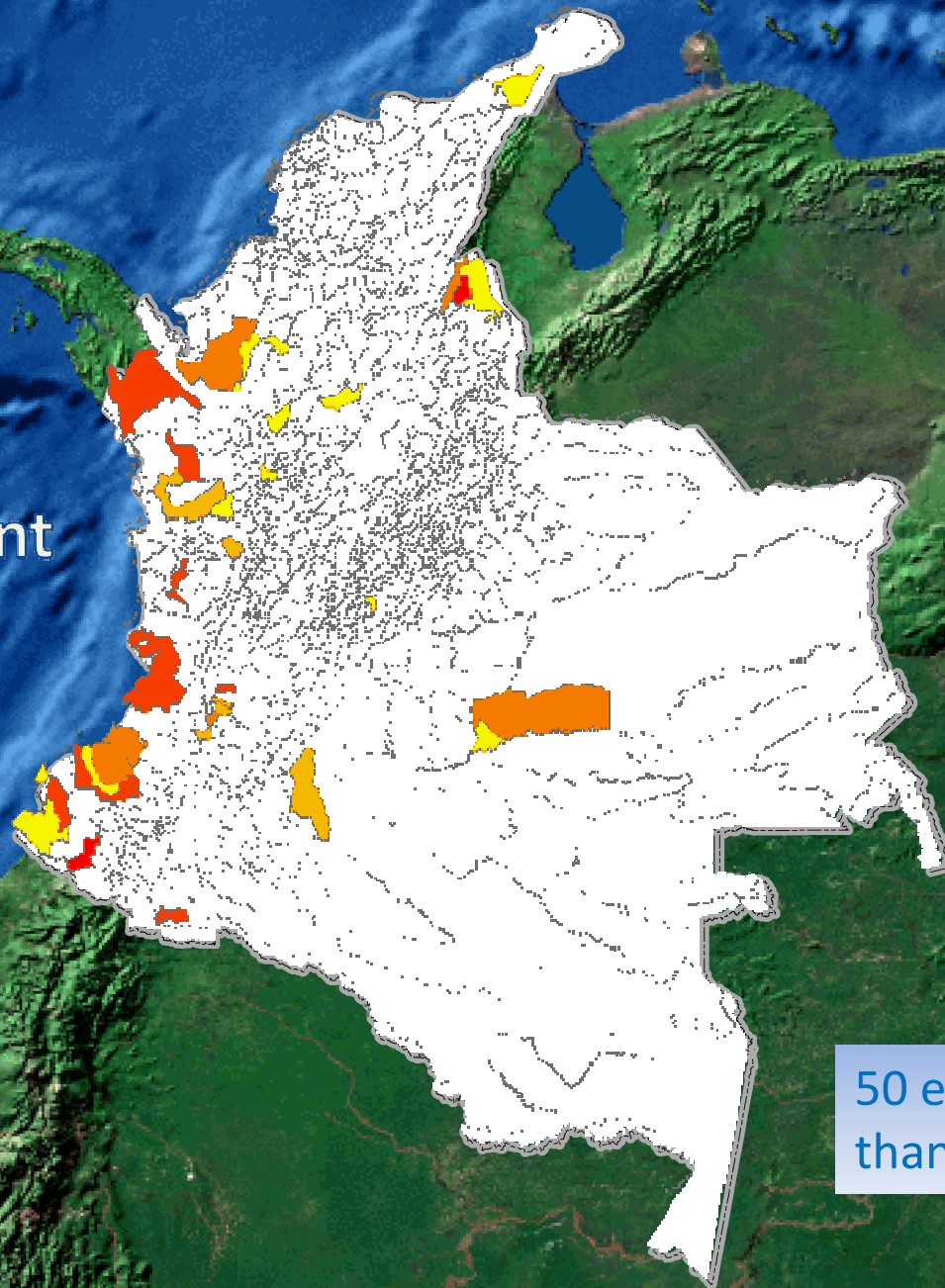
Source: OCHA estimates

111 events / more
than 32,000 IDPs



Mass displacement 2012

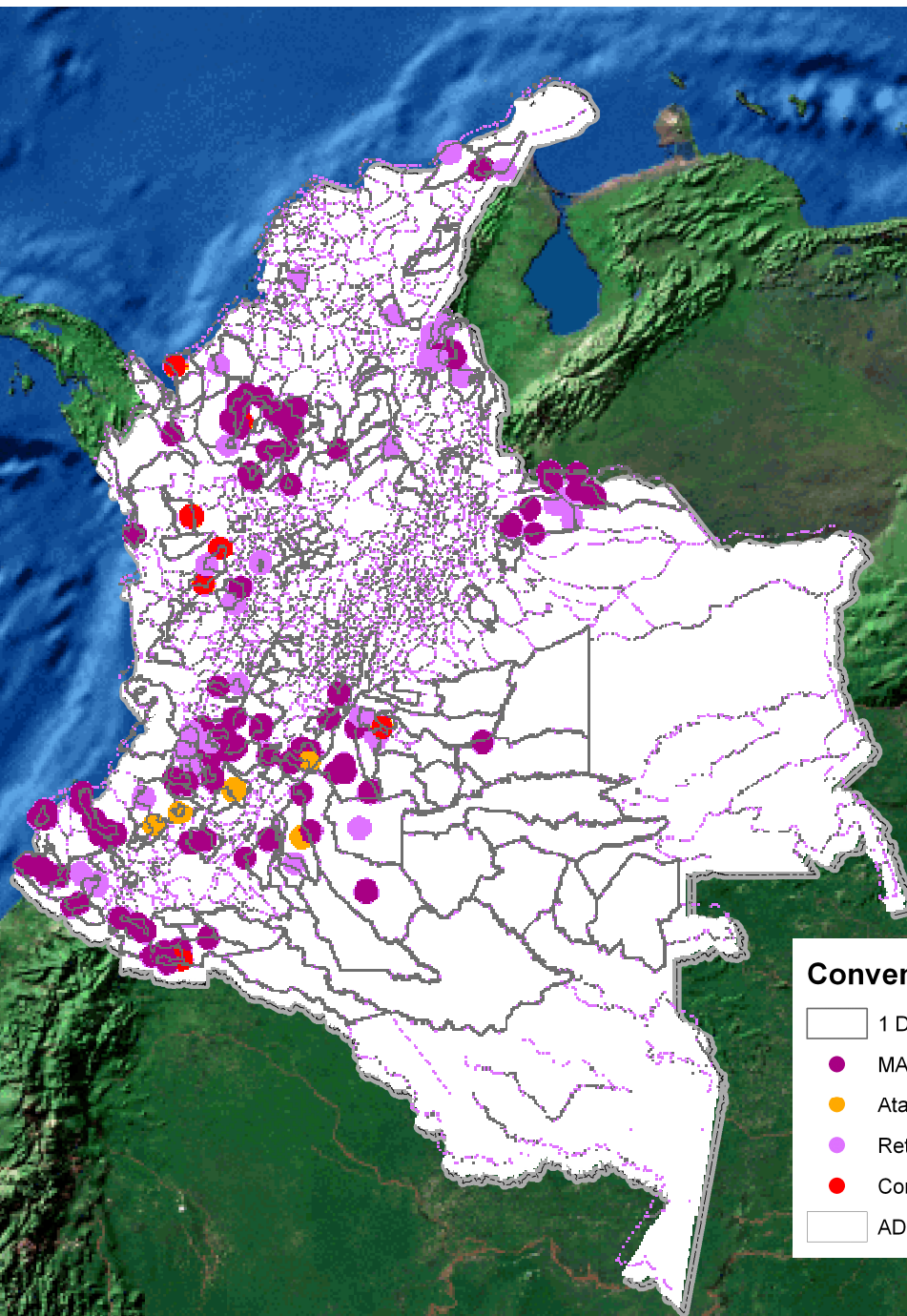
Source: OCHA estimates



50 events / more
than 12,000 IDPs

Humanitarian access 2012

Source: OCHA

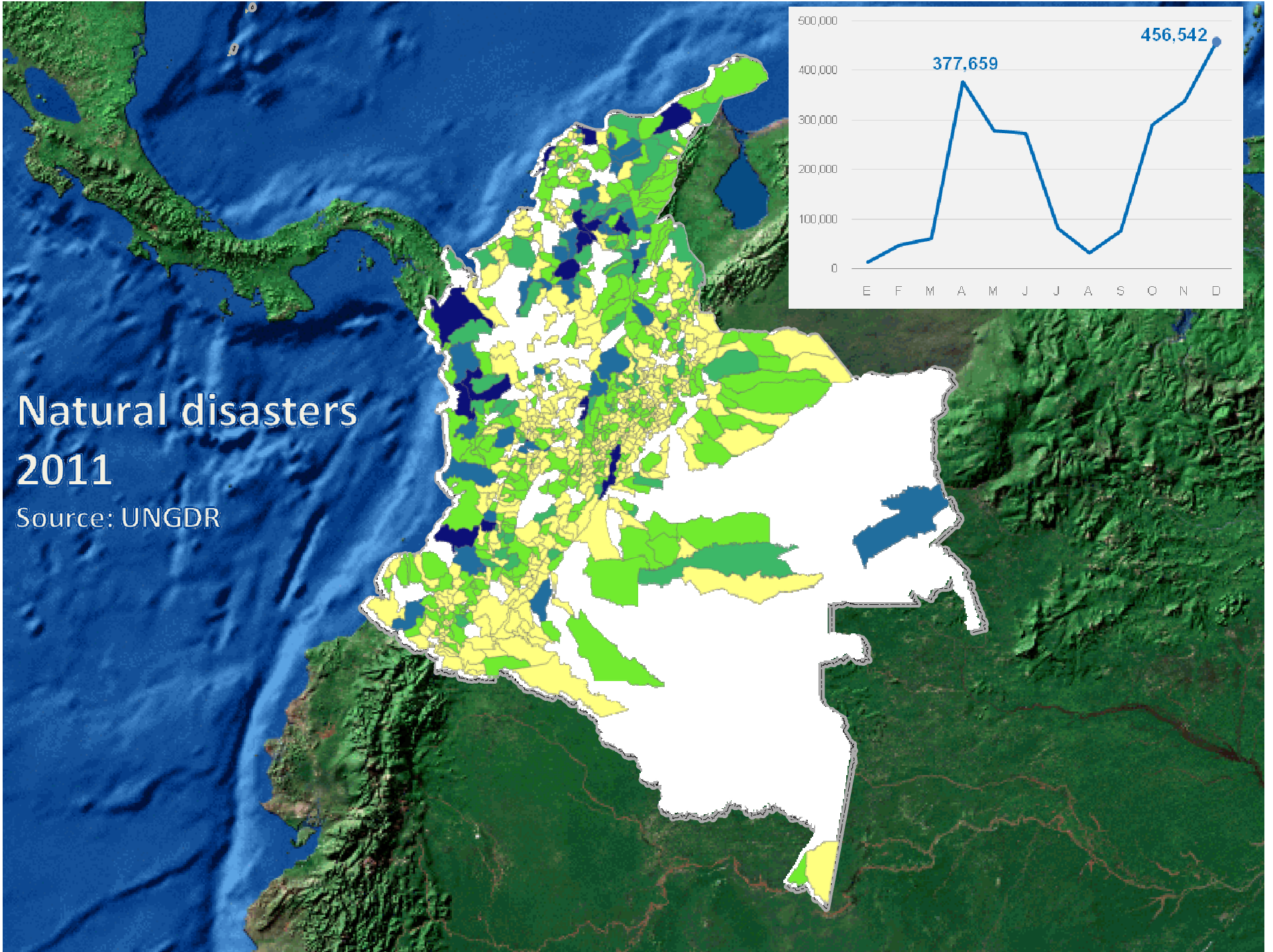
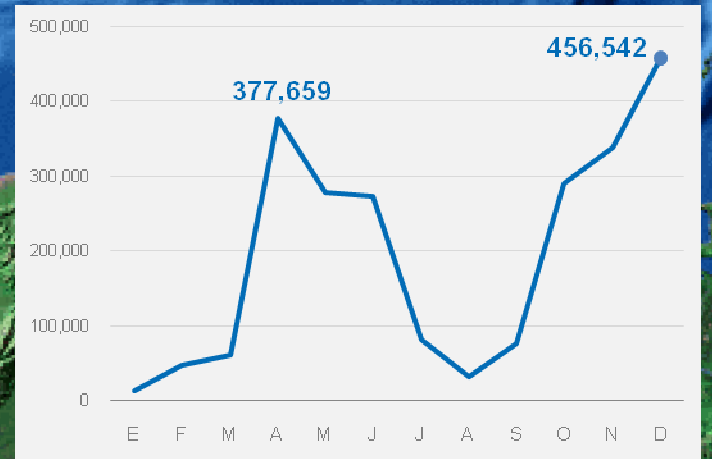


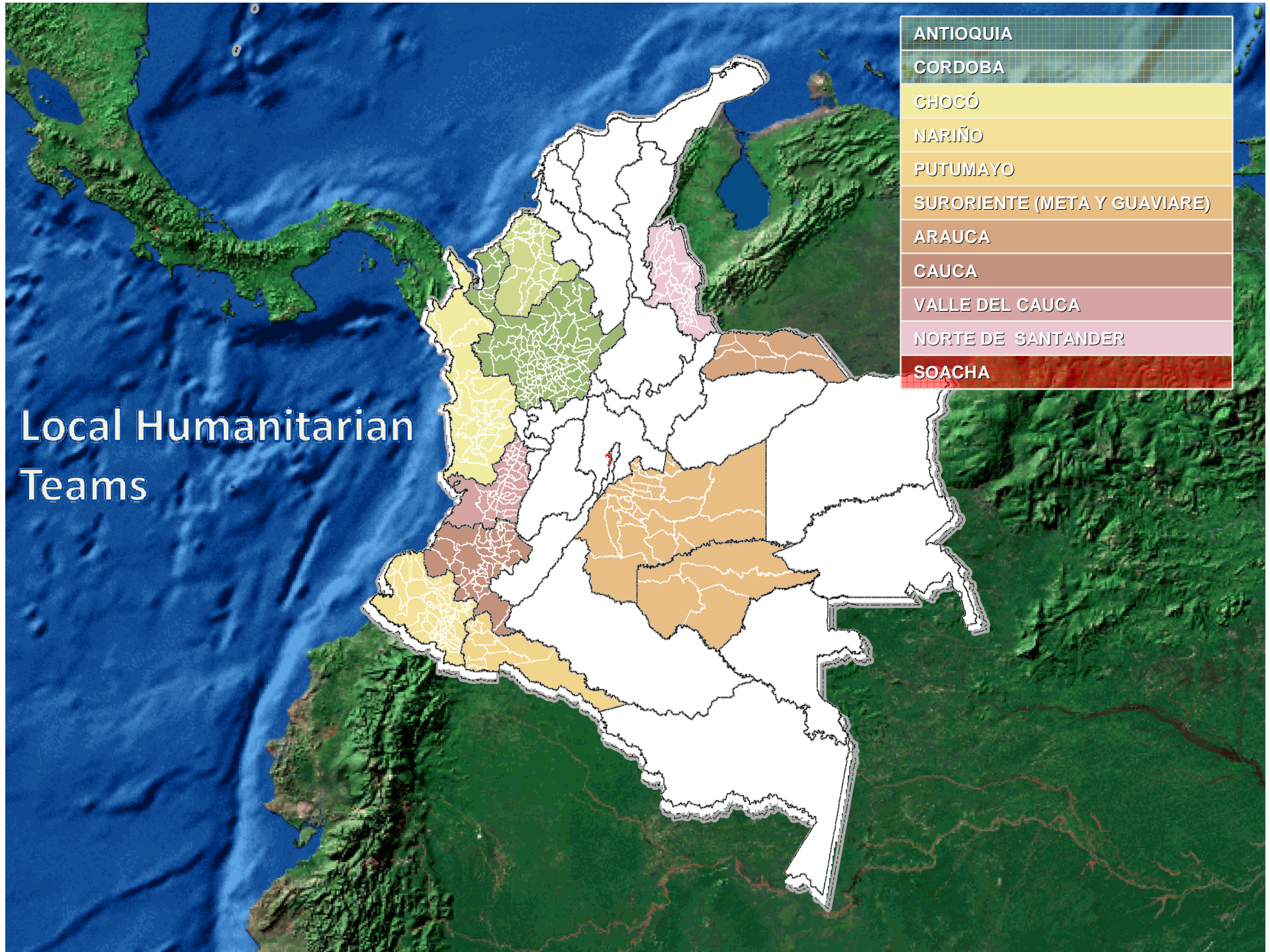
Convenciones

- 1 Dot = 1
- MAP-MUSE
- Ataque a Misión Médico
- Retenes
- Confinamiento
- ADM_Municipio

Natural disasters 2011

Source: UNGDR





Local Humanitarian
Teams

Common Humanitarian Framework

Added value of the HCT in Colombia

- **Resource mobilization for emergency response:** In 2011-2012, the HCT mobilized around USD 11,4 million through CERF and ERF, benefiting 264.312 people
- **Complementarity to State's response** with emphasis in areas with limited access and lack of governance
- **Humanitarian assistance based in principles** and quality standards
- **Territorial coverage in areas most affected** by armed conflict and natural disasters (i.e. Catatumbo, Cauca, Nariño, Chocó, Córdoba and the south east)
- Humanitarian assistance with an approach to **durable solutions**
- **Advocacy** to raise awareness on gaps in the response and on the situation of the most vulnerable communities that are not benefiting from economic growth



November 2011: The HC shares CHF with MoFA requesting for a dialogue space with the HCT

Feb/March 2012: MoFA and key institutions welcome and send comments to the CHF: overall reception is positive

June 2012: Scheduled meeting of the GoC and the HCT to establish strategic dialogue based on the CHF

Jan 2012: local planning is based in the CHF

March 2012: the HCT holds annual retreat to define priorities based on the CHF



Challenges

- Financing: Guarantee **adequate and predictable levels of humanitarian financing** in order to address unmet needs and complement State response in areas where there are access constraints
- Leadership and accountability: Implement the IASC Transformative Agenda by **strengthening rapid response capacities of the HCT and improve accountability** to communities, authorities and donors through measurable impact
- Advocacy: Although Colombia is a middle-income Country exhibiting high levels of economic growth it is crucial to **draw attention to pressing humanitarian needs, advocate on behalf of vulnerable-communities, and mobilize a timely and effective response in areas affected by conflict, poverty and prone to natural disasters**



Thank you



OCHA
Colombia