



UNITED NATIONS  
Office for the Coordination of Humanitarian Affairs  
occupied Palestinian territory

### 1. Increasing humanitarian vulnerability in East Jerusalem

- Since 1967, Israeli measures and policies
  - have altered the status of East Jerusalem, contrary to international law and UN SC resolutions
  - have affected the residency status of East Jerusalem Palestinians, their access to education and health services and their ability to plan, build and develop communities
- = 'push factors' undermining the Palestinian presence in East Jerusalem

East Jerusalem: Key Humanitarian Concerns March 2011

UNITED NATIONS  
Office for the Coordination of Humanitarian Affairs  
occupied Palestinian territory

### 2. Increasing isolation of East Jerusalem

- East Jerusalem focus for medical care, education, economic activity, social and family relationships and for worship for all Palestinians in West Bank and Gaza Strip
  - Israeli measures – residency status, checkpoints and restrictive access policies – cut off East Jerusalem from the rest of West Bank and Gaza Strip
  - Barrier compounding physical, political, economic, social and cultural separation of East Jerusalem

East Jerusalem: Key Humanitarian Concerns March 2011

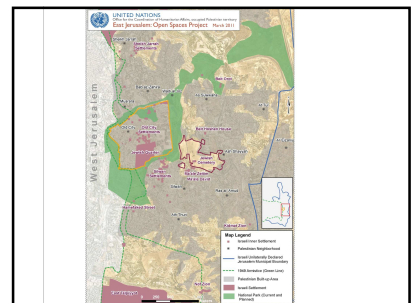
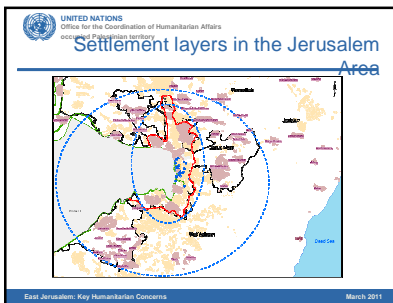
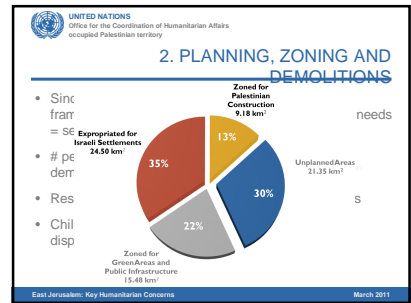


UNITED NATIONS  
Office for the Coordination of Humanitarian Affairs  
occupied Palestinian territory

### 1. RESIDENCY RIGHTS

- Under Israeli law, East Jerusalem Palestinians are defined as non-citizens
- Applicants for residency face a complex and often lengthy process
- Permits are often denied, leading to the separation of children from their parents
- Impact on family unity and social cohesion

East Jerusalem: Key Humanitarian Concerns March 2011



UNITED NATIONS  
Office for the Coordination of Humanitarian Affairs  
occupied Palestinian territory

### 4. IMPACT OF THE BARRIER

East Jerusalem: Key Humanitarian Concerns March 2011

UNITED NATIONS  
Office for the Coordination of Humanitarian Affairs  
occupied Palestinian territory

### 4. IMPACT OF THE BARRIER

East Jerusalem: Key Humanitarian Concerns March 2011

UNITED NATIONS  
Office for the Coordination of Humanitarian Affairs  
occupied Palestinian territory

### 4. IMPACT OF THE BARRIER

East Jerusalem: Key Humanitarian Concerns March 2011

UNITED NATIONS  
Office for the Coordination of Humanitarian Affairs  
occupied Palestinian territory

### 4. IMPACT OF THE BARRIER

East Jerusalem: Key Humanitarian Concerns March 2011

UNITED NATIONS  
Office for the Coordination of Humanitarian Affairs  
occupied Palestinian territory

### 5. RESTRICTIONS ON ACCESS TO

East Jerusalem: Key Humanitarian Concerns March 2011

UNITED NATIONS  
Office for the Coordination of Humanitarian Affairs  
occupied Palestinian territory

### SUMMARY OF 5 'PUSH FACTORS'

- Uncertain residency status
- Inadequate planning and zoning
- Impact of settlements
- Impact of Barrier
- Inadequate and substandard education facilities

East Jerusalem: Key Humanitarian Concerns March 2011

UNITED NATIONS  
Office for the Coordination of Humanitarian Affairs  
occupied Palestinian territory

### EAST JERUSALEM: INTEGRAL PART OF OPT

- East Jerusalem a focus for specialized medical care, education, economic activity, and for worship for all Palestinians in West Bank and Gaza Strip
- Restrictions since 1967:
  - Palestinian residents of West Bank and Gaza Strip prohibited from residing in East Jerusalem, other than through 'family unification'
  - Palestinians from West Bank and Gaza Strip need permits to enter East Jerusalem for education, health and other vital services

East Jerusalem: Key Humanitarian Concerns March 2011

UNITED NATIONS  
Office for the Coordination of Humanitarian Affairs  
occupied Palestinian territory

### RESTRICTIONS ON ACCESS TO HEALTH

East Jerusalem: Key Humanitarian Concerns March 2011

UNITED NATIONS  
Office for the Coordination of Humanitarian Affairs  
occupied Palestinian territory

### Increasing Isolation of East Jerusalem

East Jerusalem: Key Humanitarian Concerns March 2011



## The Way Forward

- As occupier, Israel is bound by international law for actions in East Jerusalem. It must ensure that the population is able to exercise its rights to health, education, housing, and employment.
- Israel is an integral part of the city. The city remains an integral part of the Palestinian population.
- Only the Security Council can determine the final status of the city and a just and agreed-upon arrangement.

