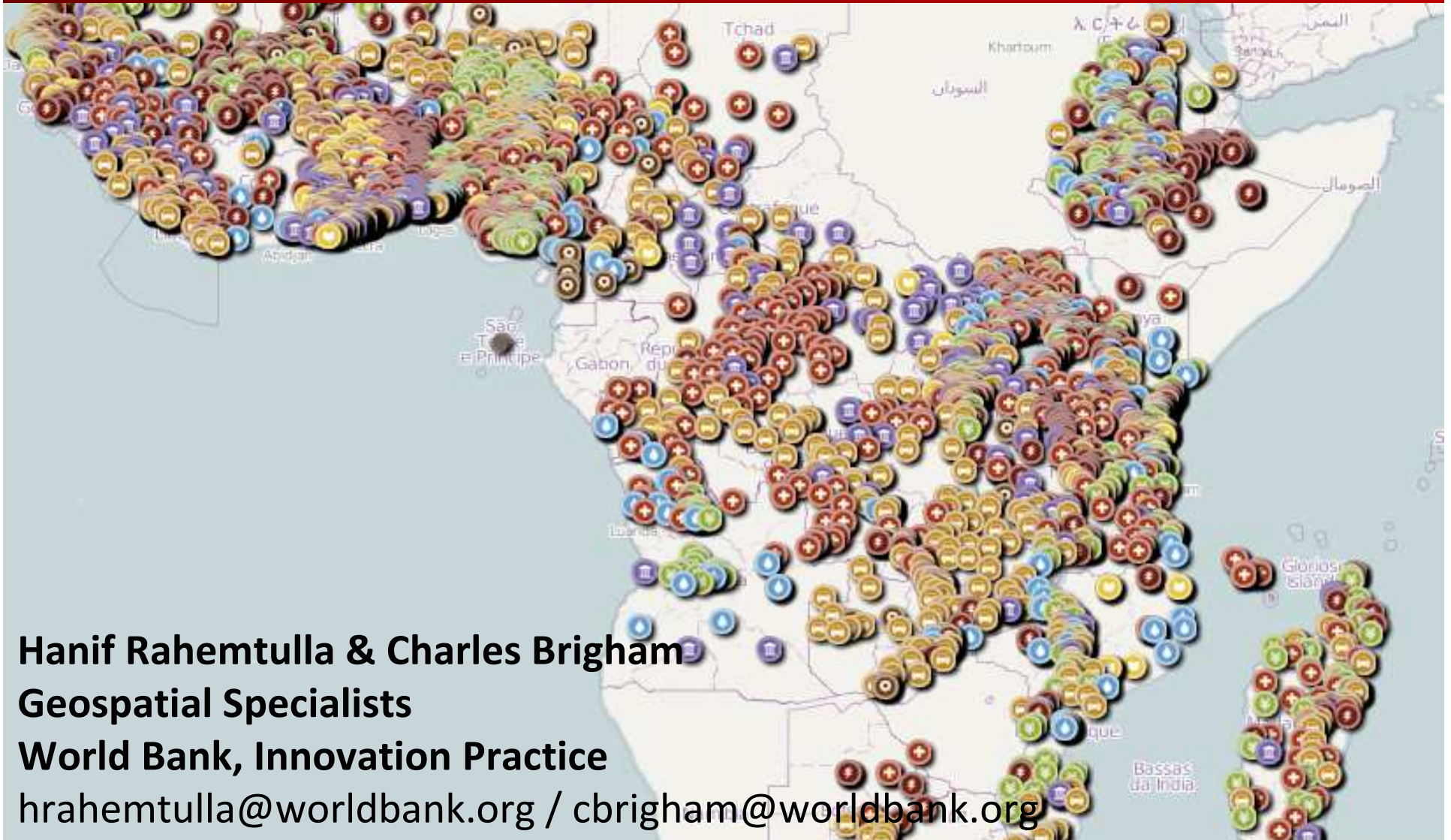


Mapping for Results

Enhance Transparency and Citizen Engagement for Better Results



Hanif Rahemtulla & Charles Brigham

Geospatial Specialists

World Bank, Innovation Practice

hrahemtulla@worldbank.org / cbrigham@worldbank.org

Geography of International Development

Key Objectives of the M4R Initiative

Incorporating geography to visualizes the sub-national location of World Bank projects to:

- better monitor impact on people;
- improve aid effectiveness and coordination;
- enhance transparency and social accountability; and
- enable citizens and other stakeholders to provide direct feedback on project results.

Mapping for Results Initiative

► BANGLADESH **51 financed activities working in 1,218 mapped locations**

BASE MAP: MALNUTRITION ► ACTIVITIES: BY SECTOR ►

FINANCED ACTIVITIES BY SECTOR

\$5.75 billion

- Health...ervices - \$1.07b
- Transp...rtation - \$947.46m
- Public...Justice - \$921.78m
- Water,...tection - \$796.98m
- Energy... mining - \$793.26m
- Education - \$563.24m
- Finance - \$255.50m
- Indust...d trade - \$161.37m
- Agricu...orestry - \$158.95m
- Inform...cations - \$84.58m

MORE DATA ►

BANGLADESH LINKS

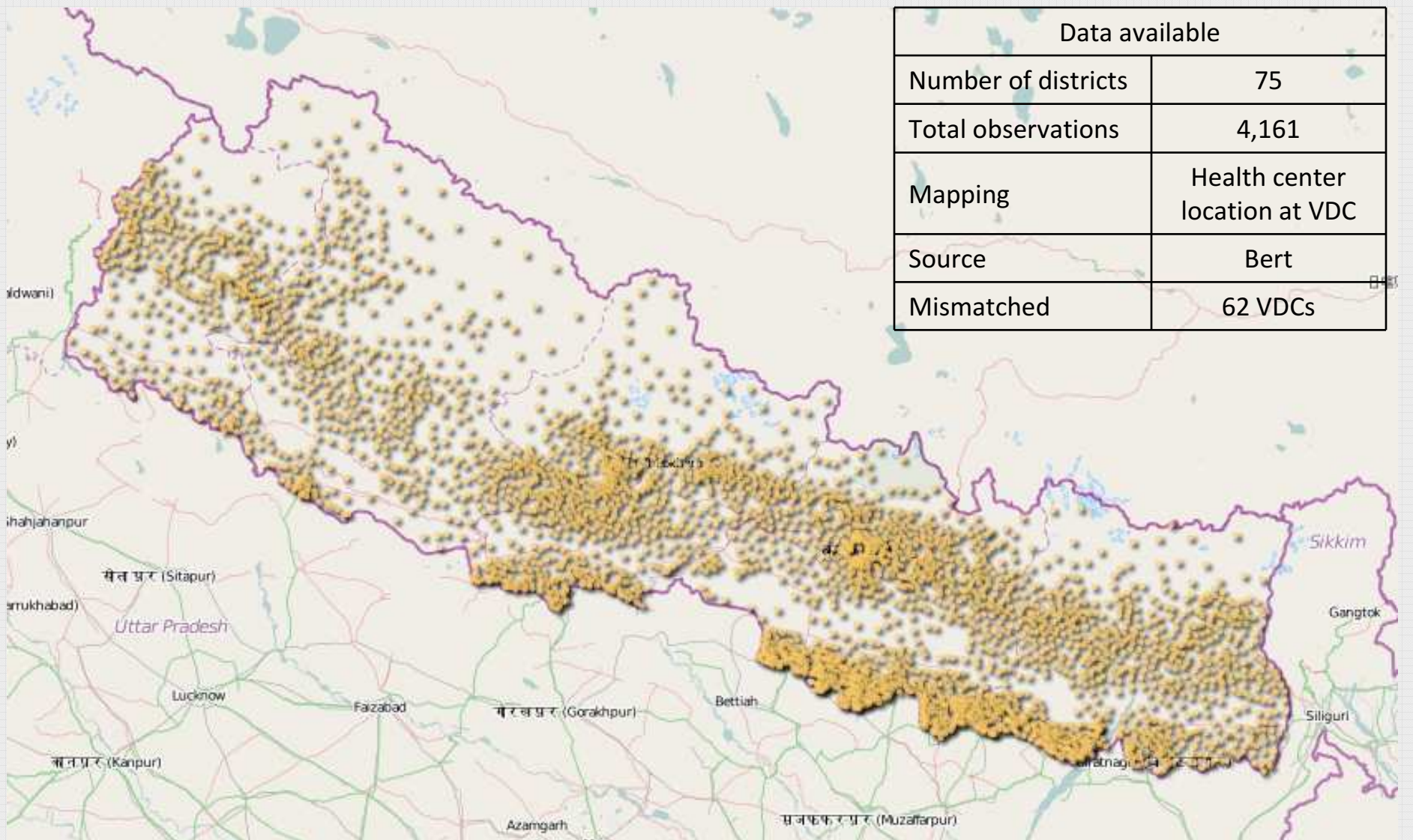
- [Bangladesh Home »](#)
- [Bangladesh Country Brief »](#)
- [Bangladesh Results Profile »](#)
- [IDA at Work in Bangladesh »](#)
- [Bangladesh Finances »](#)

BANGLADESH

Bangladesh has sustained an impressive track record for growth and development. In the past decade, the economy has grown at nearly 6 percent per annum despite frequent natural disasters and the fuel, food price and global financial crises. In the past two decades, poverty was reduced by nearly one third whereas life expectancy, literacy and per capita food production have increased significantly.

Title	Project ID	Amount			
Bangladesh Padma Multipurpose Bridge Project	P111017	\$1200 million	Transportation	Feb-2011	IBRD/IDA

Geography of International Development



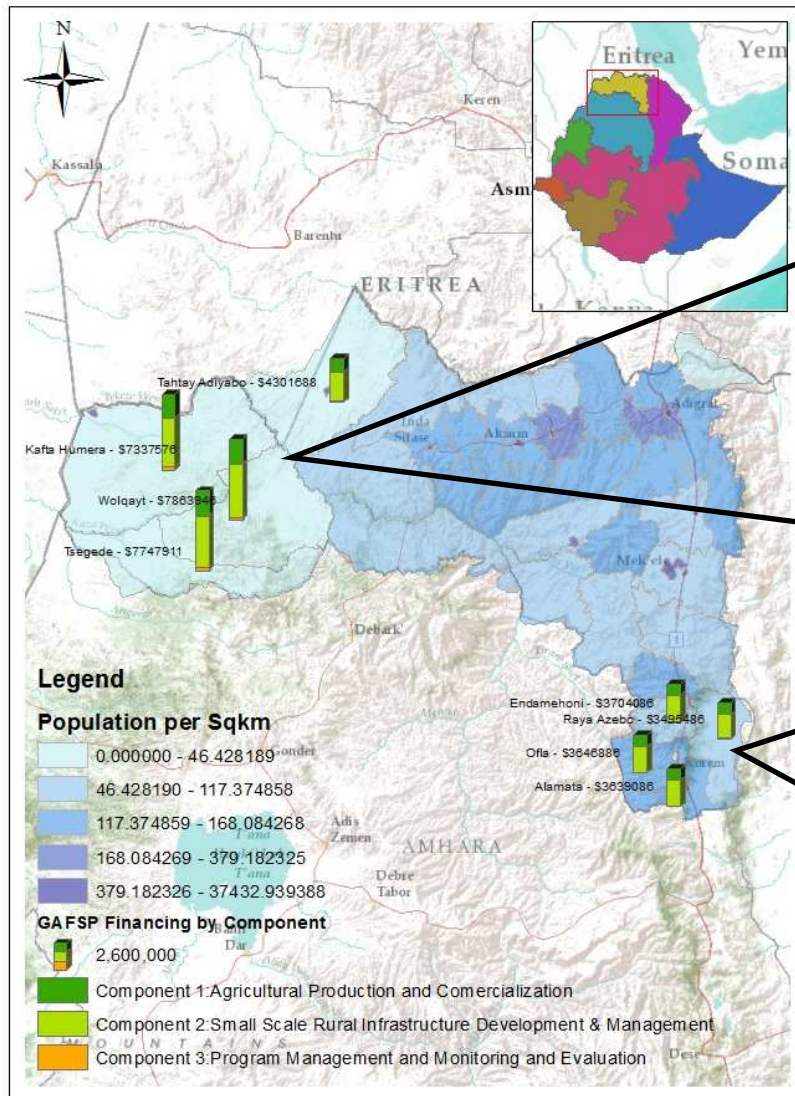
GAFSP: The Geography of Food Security



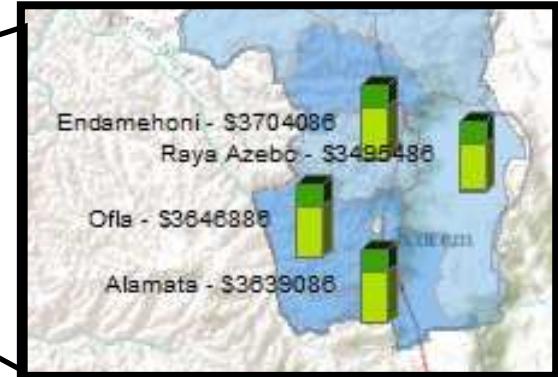
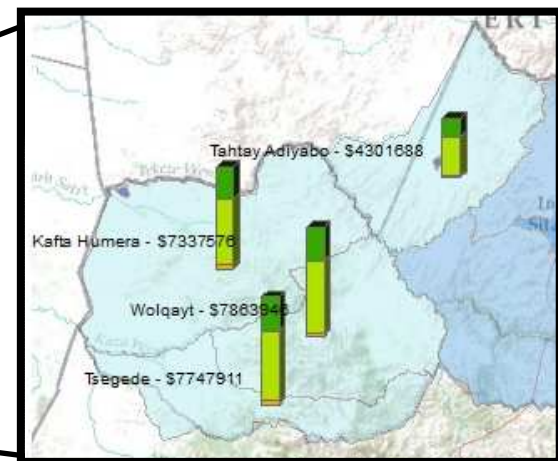
Interactive graphic showing % of GAFSP to AGP from 2011 to 2014

Local Geography: Targets Development Intervention

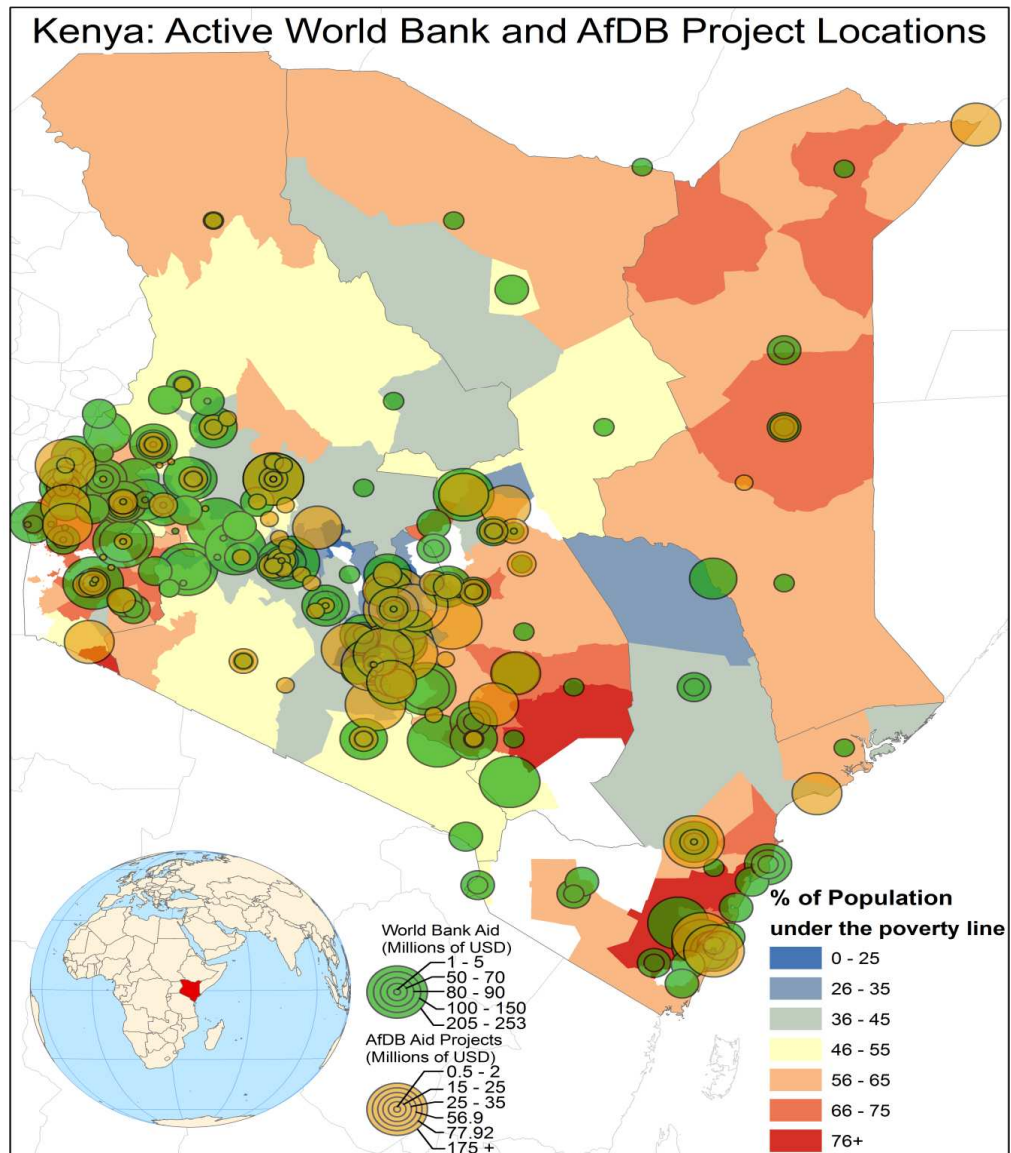
GAFSP Financing by Wareda in Tigray Region



Localized Financing

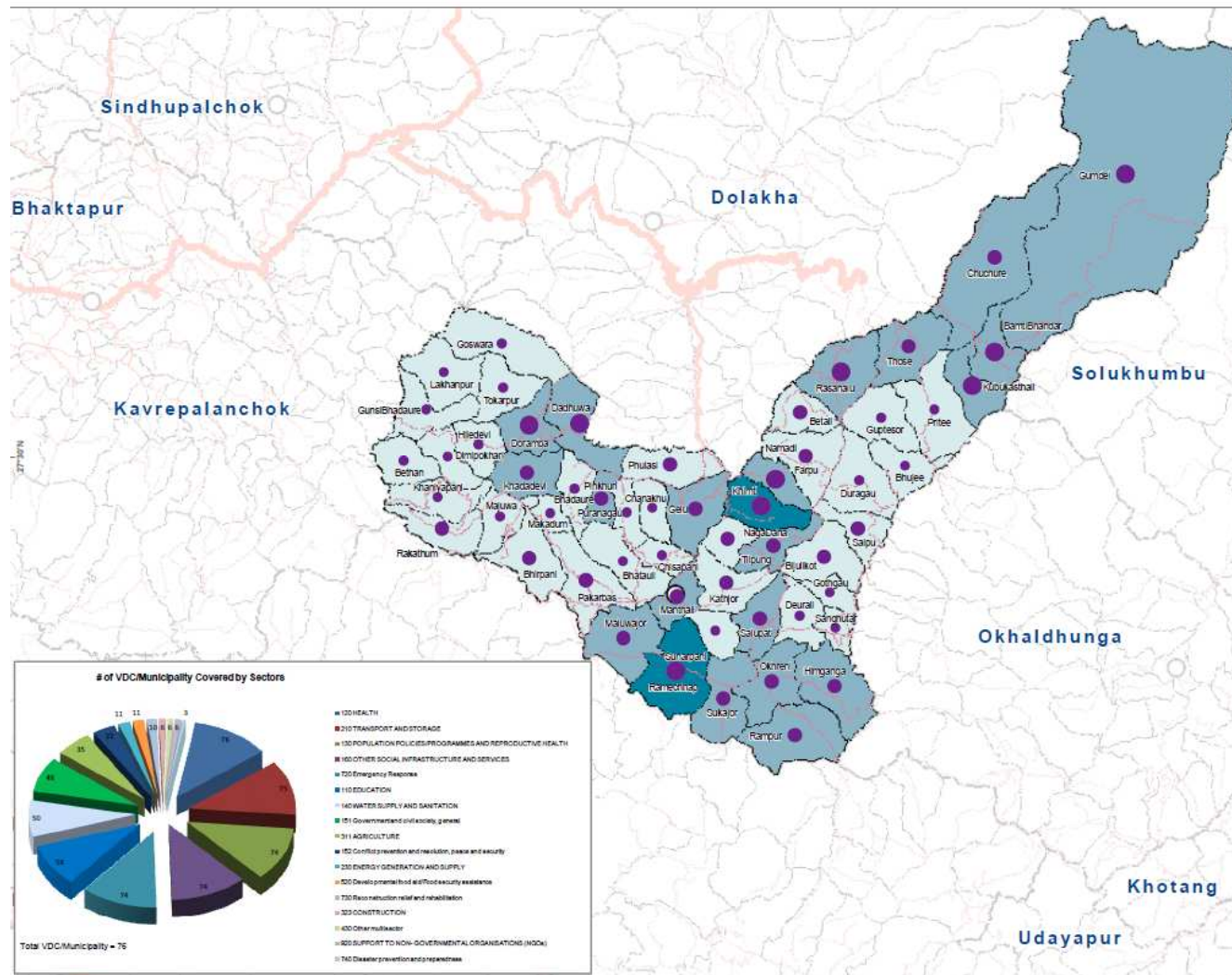


Improve Aid Transparency and Coordination



Partnership with UN on Aid Coordination (Nepal)

NEPAL - Donor Transparency Mapping: Number of Sectors/Agency in VDCs of Ramechhap District
April 2010



Legend

- District HQ
- Administrative Boundaries**
 - - - District
 - - - VDC
- Major Roads**
 - Highway
 - Feeder Road
 - District Road
 - Other Road/Main Trail
- Number of Sectors**
 - 10
 - 11
 - 12
- Number of Agency**
 - 3
 - 4
 - 5

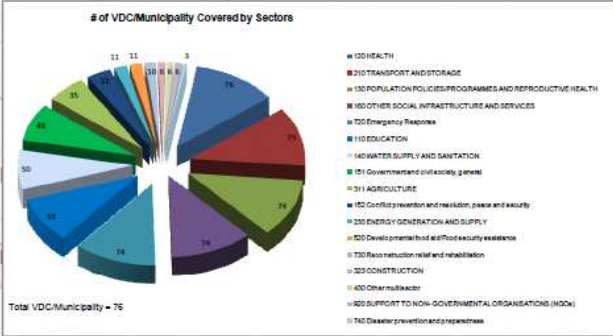
Map Produced by OCHA Nepal.

Map Doc Name: Ramechhap_Donor_numSectorAgency_A4_08032010_v01
GUIDE Number: N/A
Creation Date: 8 March 2010
Projection/Datum: MUTM / Everest 1830
Web Resources: <http://www.un.org.np>



Map data source(s): Data provided through RC Office
Geodata: GIST, ESRI

Disclaimers:
The designations employed and the presentation of material on this map do not imply the expression of any opinion whatsoever on the part of the Secretariat of the United Nations concerning the legal status of any country, territory, city or area or of its authorities, or concerning the delimitation of its frontiers or boundaries.



Envisioning the Future: GeoStories


English Español Français Русский العربية 中文

THE WORLD BANK
Working for a World Free of Poverty

ABOUT DATA RESEARCH LEARNING NEWS PROJECTS & OPERATIONS PUBLICATIONS COUNTRIES TOPICS


GEOSTORY

By Country By Topic Indicators Data Catalog Microdata News About For Developers Products



**Impact of Projects on the Ground:
Example from Georgia**

This is a rough draft that demonstrates the potential for the World Bank to tell geography-based stories about its activities around the world. This sample highlights transportation and water projects in the nation of Georgia.



SHARE EMBED

START

You are here GEOSTORY

THE WORLD BANK Site Map Index FAQs Contact Us Search API RSS Fraud & Corruption Hotline © 2011 The World Bank Group. All Rights Reserved. Legal 1-800-831-0463


English Español Français Русский العربية 中文

THE WORLD BANK
Working for a World Free of Poverty


ABOUT DATA RESEARCH LEARNING NEWS PROJECTS & OPERATIONS PUBLICATIONS COUNTRIES TOPICS

GEOSTORY

By Country By Topic Indicators Data Catalog Microdata News About For Developers Products



BEFORE **AFTER**



Story Point 8 of 8 | [Return to title Page](#)

Road Rehabilitation on Tamar Mape Street and Vagzali Square

A \$405,000 project to improve traffic conditions and create convenient conditions for safe traffic flow.

You are here GEOSTORY

THE WORLD BANK Site Map Index FAQs Contact Us Search API RSS Fraud & Corruption Hotline © 2011 The World Bank Group. All Rights Reserved. Legal 1-800-831-0463

Envisioning the Future: Citizen Feedback



English Español Français Русский عربي 中文

Search GO

ABOUT DATA RESEARCH LEARNING NEWS **PROJECTS & OPERATIONS** PUBLICATIONS COUNTRIES TOPICS

OnTrack - East Sang'alo Poultry Farming Project

East Sangalo, Bungoma County

SHARE

LIKE



PROJECT ID

Third National Fadama III - P096572

IMPLEMENTATION AGENCY

National Fadama Coordination NFCO

CONTACT

Joseph Omolo

LOCATION

East Sangalo, Bungoma County

AMOUNT ALLOCATED

\$65M

PROJECT STATUS

Active

Project Overview - This East Sang'alo Poultry Farming project (Project Type CAP, Poultry sub sector of Livestock) hopes to achieve the following objectives: To improve household incomes through commercial indigenous poultry farming

Activity Snap Shot



Ask A Question

Report A Problem

Share Your Story

Most Viewed | All



This East Sang'alo Poultry Farming project

This East Sang'alo Poultry Farming project (Project Type CAP, Poultry sub sector of Livestock)



Indonesia: PNPM Citizen Feedback Pilot

300 facebook PNPM telah terdaftar dalam peta ini.

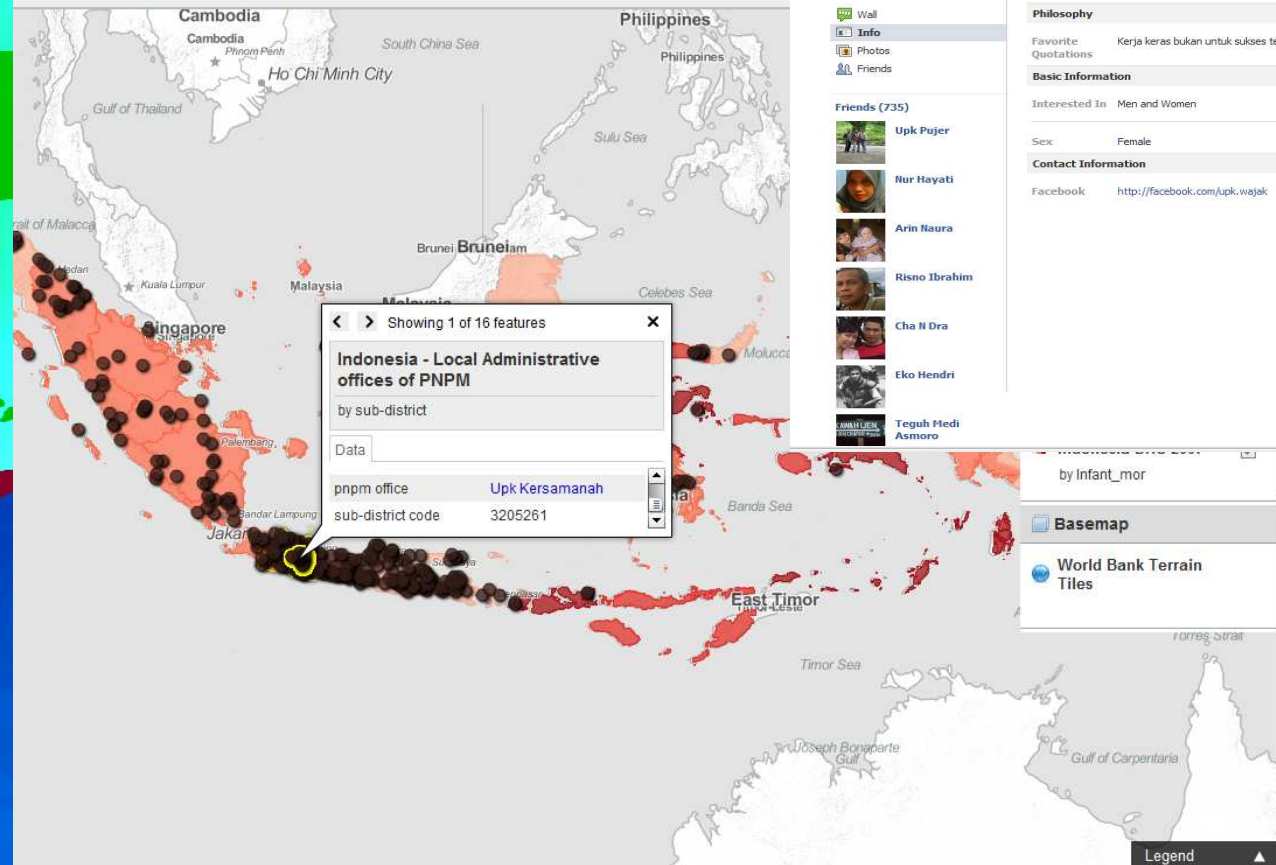


Apakah Facebook PNPM anda salah satunya?

Daftarkan facebook PNPM anda ke:
komunikasi@pnpm-mandiri.org
dengan menyertakan nama kecamatan dan kabupaten Anda

Akses peta ini di:
<http://geocommons.com/maps/112365>

Local Administrative Offices of PNPM



facebook



Upk Wajak

Worked at PNPM Mandiri Perdesaan Lives in Malang From Malang

Work and Education

Employers: PNPM Mandiri Perdesaan

Philosophy

Favorite Quotations: Kerja keras bukan untuk sukses tetapi untuk sebuah nilai

Basic Information

Interested In: Men and Women

Sex: Female

Contact Information

Facebook: <http://facebook.com/upk.wajak>

Friends (735)



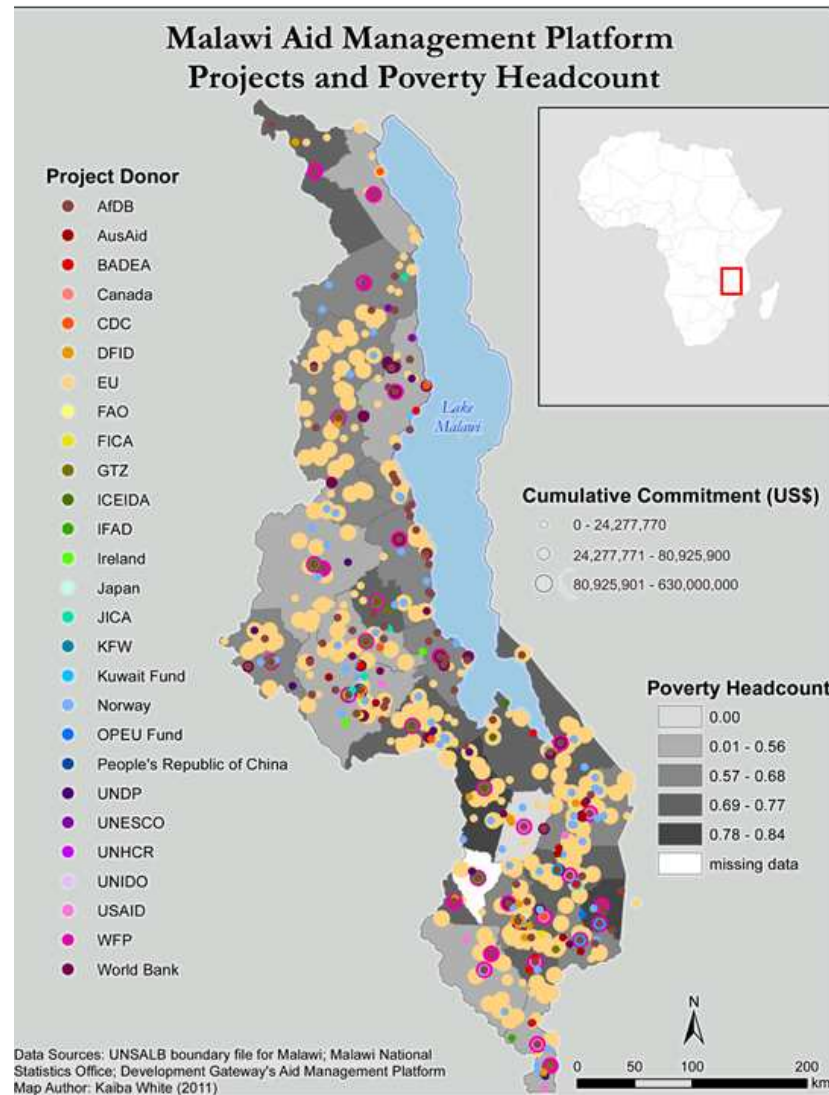
by Infant_mor

Basemap

World Bank Terrain Tiles

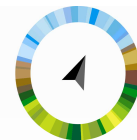
Legend

Access to Information



27 Donors

AFDB, AusAid, BADEA, Canada, CDC, DFID, EU, FAO, FICA, GTZ, ICEIDA, IFAD, Ireland, Japan, JICA, KFW, Kuwait Fund, Norway, OPEU Fund, People's Republic of China, UNDP, UNESCO, UNHCR, UNIDO, USAID, WFP, World Bank

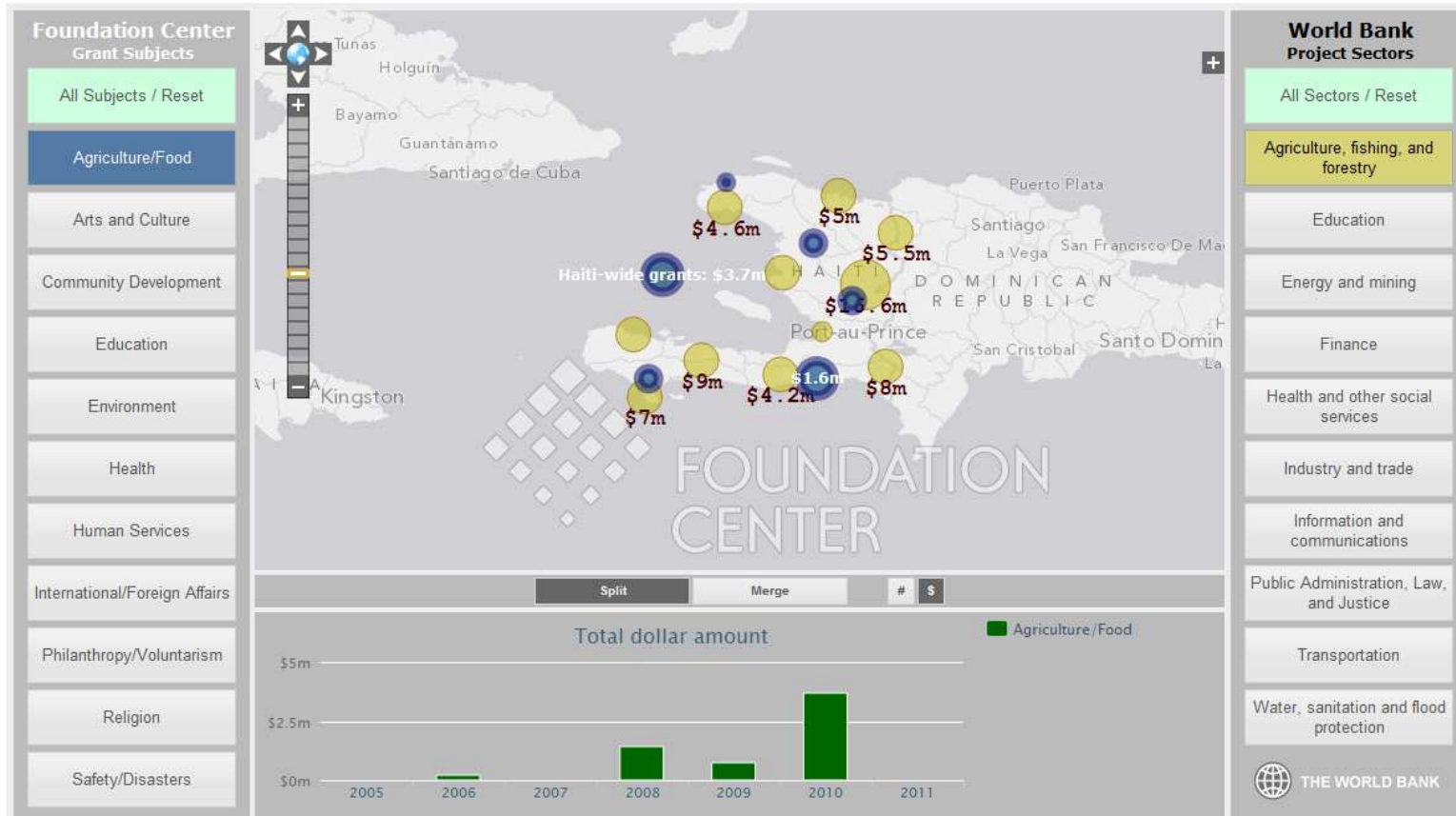


OPENAID
PARTNERSHIP

Targeting of Agricultural Projects



Open Aid Partnership Map



An Enabling Environment



Hanif Rahemtulla & Charles Brigham
Geospatial Specialists
World Bank, Innovation Practice
hrahemtulla@worldbank.org