

SAYING **NO** TO  
SEXUAL MISCONDUCT

---

# KEY CONCEPT RIDDLES



## RIDDLE #1:

*What can be used to promote goodness or personal greed?*

**Answer:** Power and Influence

**Corresponding Puzzle Piece: 5**



## RIDDLE #4:

*Making a colleague feel uncomfortable by joking about their marital status is a case of what?*

**Answer:** Sexual Harassment

**Corresponding Puzzle Piece: 8**



## RIDDLE #2:

*A distribution worker rubbing himself subtly against women waiting in line at a distribution point is a case of what?*

**Answer:** Sexual Abuse

**Corresponding Puzzle Piece: 7**



## RIDDLE #5:

*What do we need to be to make sure we are accountable to stopping sexual misconduct?*

**Answer:** Being informed about my organization's policies that are in place

**Corresponding Puzzle Piece: 4**

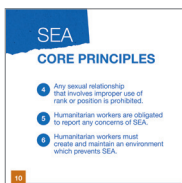
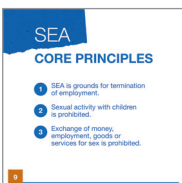


## RIDDLE #3:

*What are the common rules humanitarian workers must understand and follow in relations to sexual activity with beneficiaries?*

**Answer:** SEA Core Principles

**Corresponding Puzzle Piece: 9 & 10**

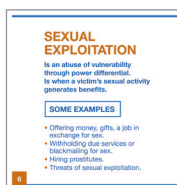


## RIDDLE #6:

*A supervisor/colleague hiring local sex workers is a case of what?*

**Answer:** Sexual Exploitation

**Corresponding Puzzle Piece: 6**



### RIDDLE #7:

*What action demonstrates that the victims are respected?*

**Answer:** Behaving in a way that puts the victim first / victim-centred approach

**Corresponding Puzzle Piece: 3**

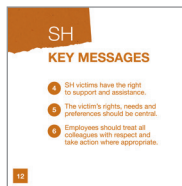
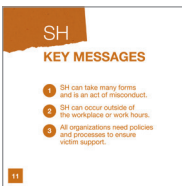


### RIDDLE #8:

*What are the main things to remember to ensure a respectable workplace free of sexual misconduct?*

**Answer:** SH key messages

**Corresponding Puzzle Piece: 11 & 12**



### RIDDLE #9:

*What can we do to prioritize a victim's needs?*

**Answer:** Providing support to victims by empathizing, listening and taking appropriate action

**Corresponding Puzzle Piece: 13**



### RIDDLE #10:

*What is one of the most effective ways to stop sexual misconduct?*

**Answer:** Reporting concerns or suspicions of sexual misconduct

**Corresponding Puzzle Piece: 1**

